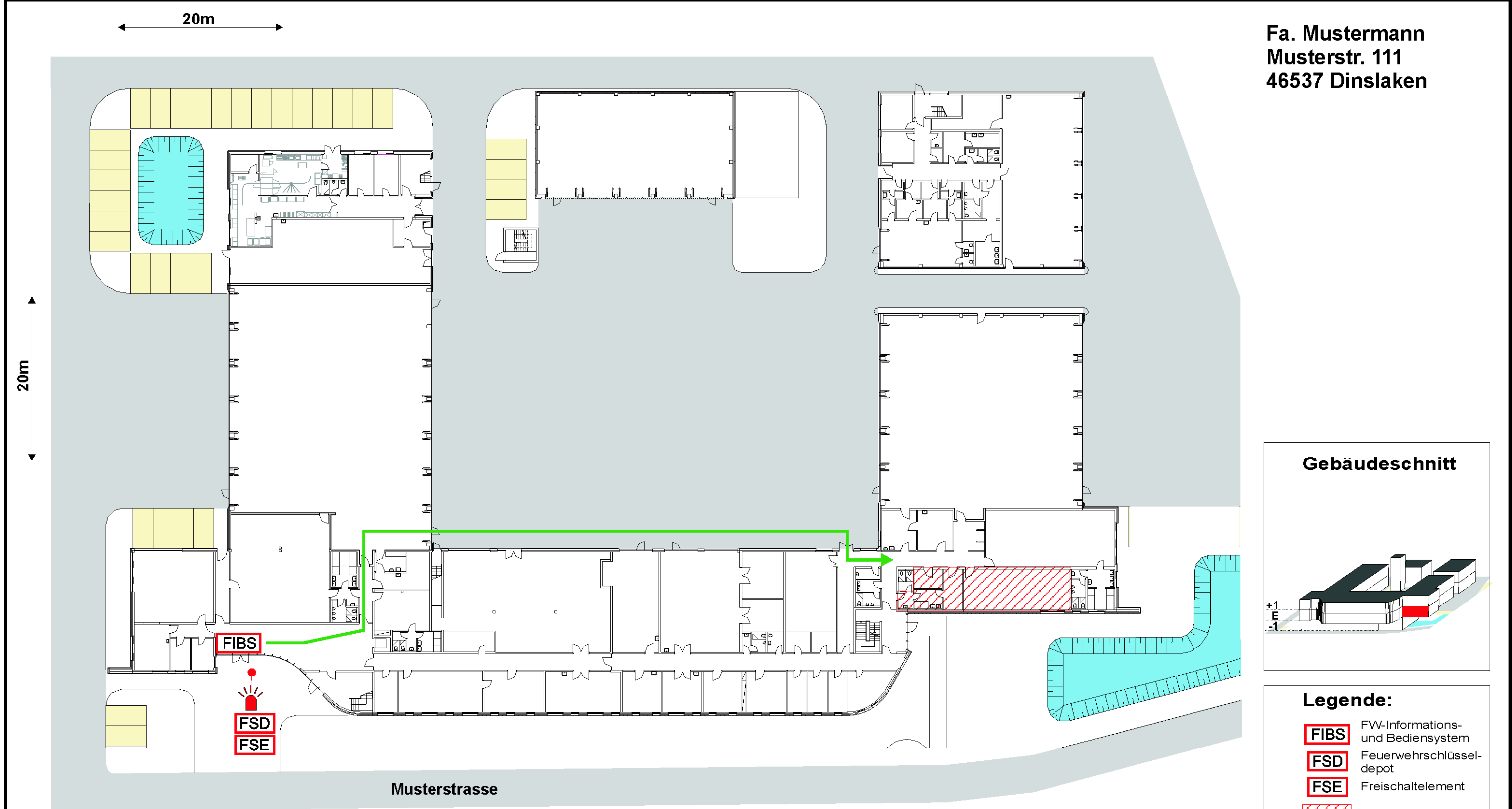


Meldergruppe 36	Stockwerk EG	Gebäude Feuerwache	Anzahl / Art der Melder 5 automatische Rauchmelder	Meldebereich F044 / F045 / F046 / F049
---------------------------	------------------------	------------------------------	--	--



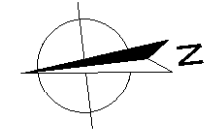
- Legende:**
- FIBS** FW-Informations- und Bediensystem
 - FSD** Feuerwehrschiessel-depot
 - FSE** Freischaltelement
 - Meldebereich
 - Blitzleuchte
 - Laufrichtung

erstellt durch:

BESTEAM-CAD
SERVICES · FERTILUNG · SERVICE

Tel.: 0201 8669820
Frintroper Str.555 - 45359 Essen

Stand: 01/2011



Meldergruppe

36

Stockwerk

EG

Gebäude

Feuerwache

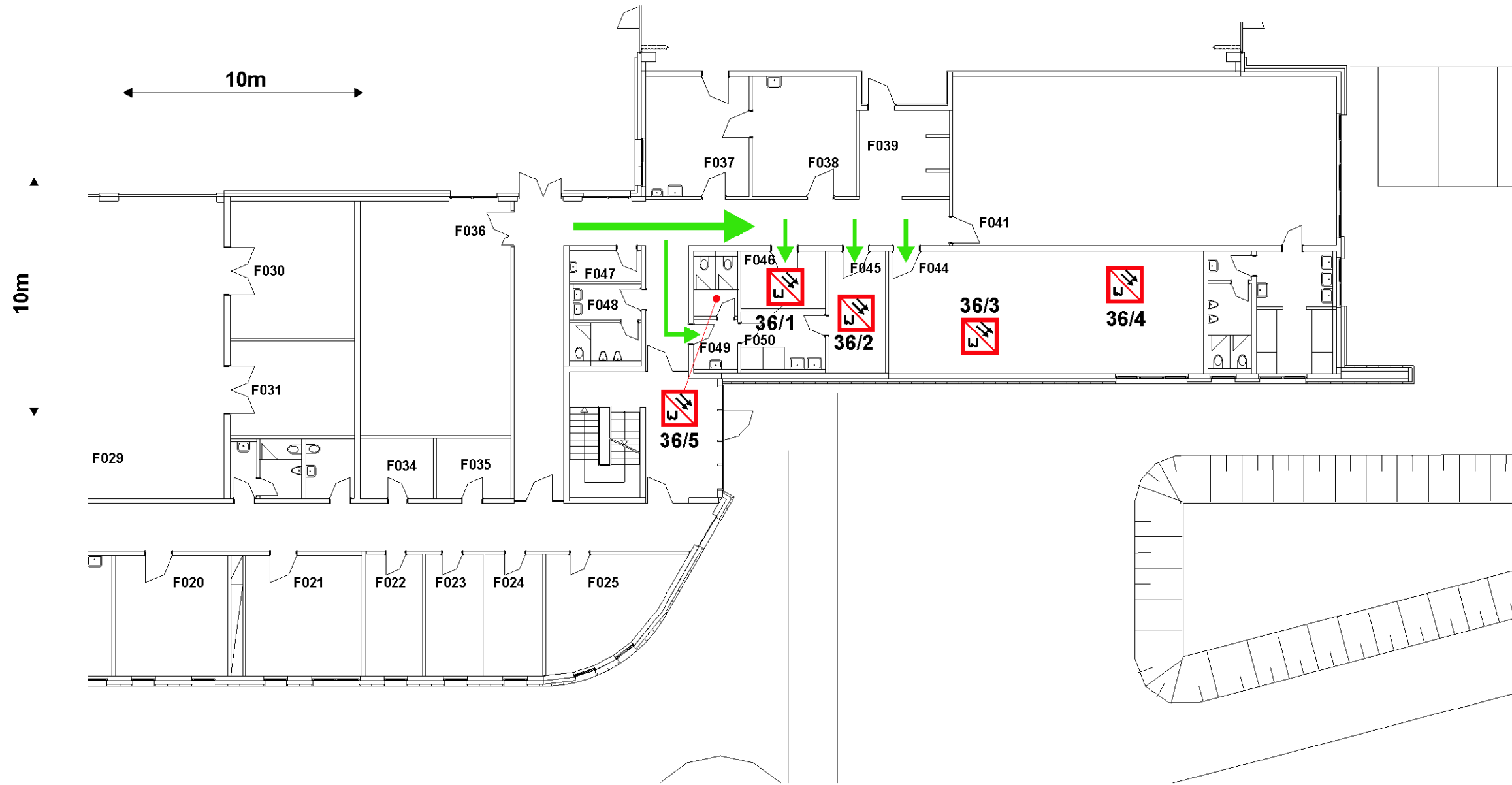
Anzahl / Art der Melder

5 automatische Rauchmelder







Meldebereich

F044 / F045 / F046 / F049

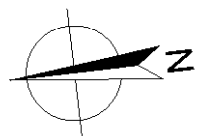
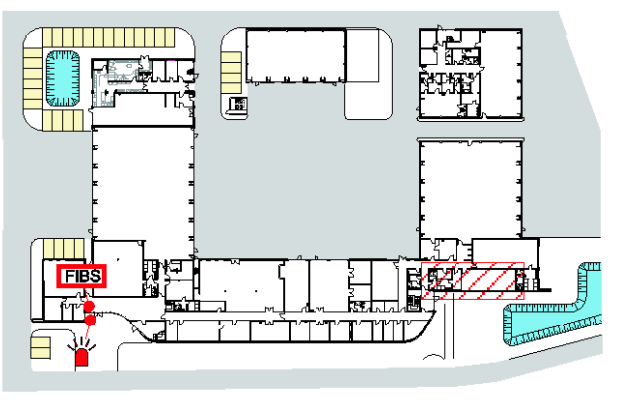
Fa. Mustermann
Musterstr. 111
46537 Dinslaken



Legende:

-  FW-Informations- und Bediensystem
-  OT-Melder
-  Wärmemelder
-  Handfeuermelder
-  Laufrichtung
-  Nordpfeil

Übersicht



erstellt durch:



Tel. : 0201 8669820
Frintroper Str.555 - 45359 Essen

Stand: 01/2011